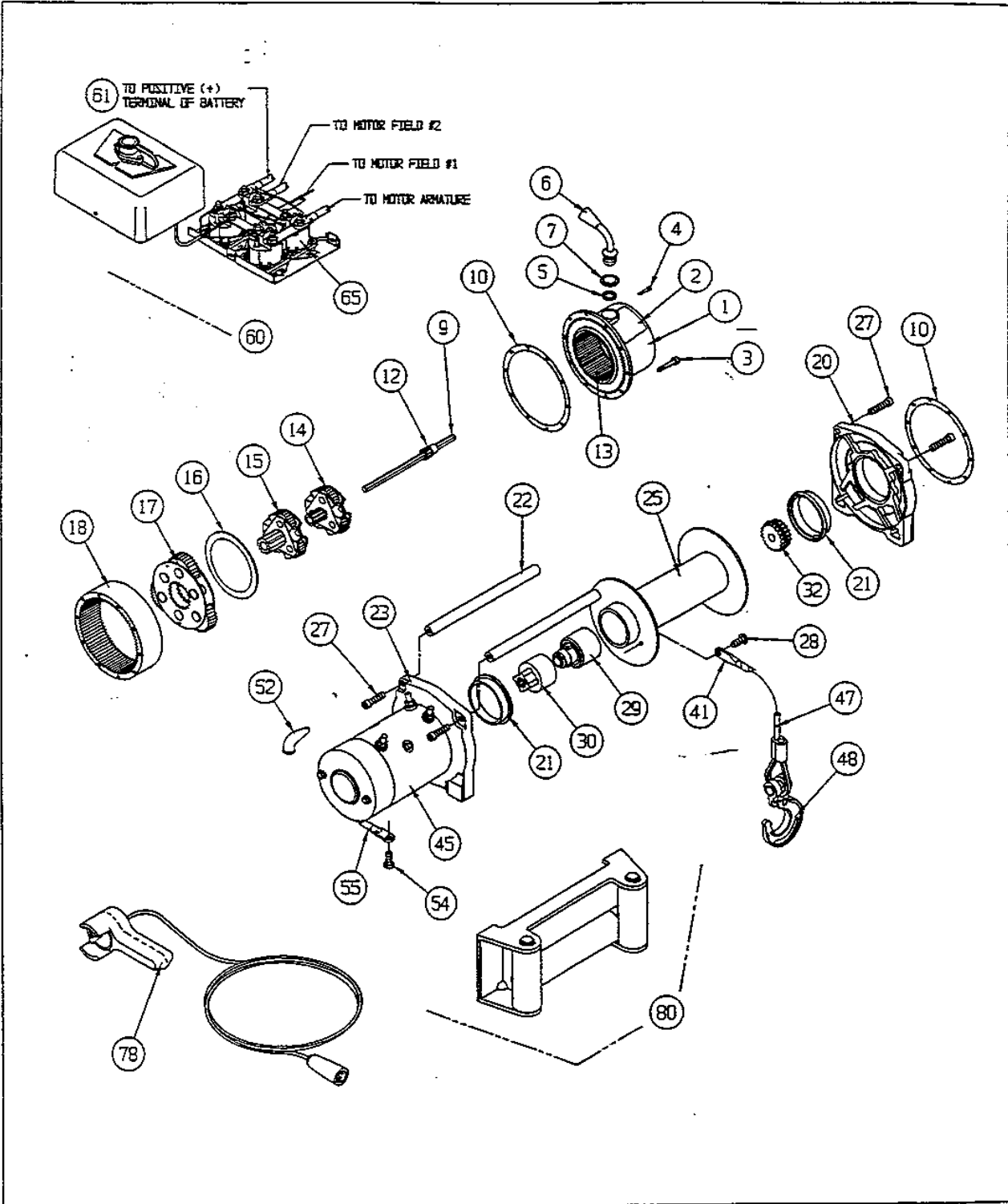


# XD9000

SERIAL NO. 383582 UP TO 626054



**WARN XD9000 WINCH  
REPLACEMENT PARTS LIST  
SERIAL NO. 383582 UP TO 626054**

(P/N 28500)

**ORDERING INFORMATION :**

When ordering please give Warn Model no., Serial number & Battery voltage. Parts may be obtained through your local dealer or distributor.

ITEM	QTY	PART NO.	DESCRIPTION
1	1	37131	END HOUSING (Includes items 6, 8,11&13)
2	1	25754	DECAL
3	10	13850	SOCKET HEAD CAPSCREW, 10-24X2 1/2
4	1		CLUTCH LEVER DETENT SCREW
5	1		SEAL, O-RING (SQUARE)
6	1	21012	CLUTCH LEVER, (Includes items 4,5&7)
7	1		RETAINER, SEAL
8	1	13868	THRUST PLATE
9	1	27372	HEX SHAFT, 10.1
10	2	13848	GASKET
11	1	13829	BUSHING
12	1	13874	SUN GEAR, 12T
13	1	13839	RING GEAR, SLIDING
14	1	34339	CARRIER ASSY, STAGE 1
15	1	34342	CARRIER ASSY, STAGE 2
16	1	13826	THRUST BEARING
17	1	28432	CARRIER ASSY, STAGE 3
18	1	25308	RING GEAR
20	1	25986	DRUM SUPPORT, GEAR TRAIN
21	2	13831	DRUM BUSHING
22	1	32408	TIE ROD
23	1	25985	DRUM SUPPORT, MOTOR, (Includes item 56)
25	1	26107	DRUM ASSEMBLY
27	4	2526	BOLT,SHCS, 5/16-18 X 1-1/4"
28	1	13699	BUTTON HEAD CAPSCREW, 1/4-20X1/4"
29	1	32455	BRAKE ASSEMBLY
30	1	26006	MOTOR COUPLER
32	1	14584	DRIVE SPLINE (Includes item 33)
33	1		RETAINING RING

**WARN XD9000 WINCH  
REPLACEMENT PARTS LIST**

**ORDERING INFORMATION:**

When ordering please give Warn Model no., Serial no., & Battery voltage. Parts may be obtained through your local dealer or distributor.

ITEM	QTY	PART NO.	DESCRIPTION
41	1	16463	WIRE ROPE TERMINAL KIT
45	1	39972	MOTOR, 12V
47	1	27110	WIRE ROPE ASSY, 5/16X100' (Includes item 41)
48	1	5320	CLEVIS HOOK, 3/8 SLIP
52	3	2090	BOOT, TERMINAL ELECTRIC
54	1	34402	HEX HEAD CAPSCREW, M8X1.25X20mm
55	1	15901	CABLE, ELECTRIC, 2GAX72"(BLACK)
56	1	8316	BALL BEARING
60	1	38842	WINCH CONTROL, 12V
61	1	33295	CABLE, ELECTRIC 2GA.,X72"(Red)
65	4	28396	SOLENOID, UPRIGHT TERMINAL
78	1	38626	REMOTE CONTROL ASSY
80	1	5742	FAIRLEAD, ROLLER

P/N 34355 REV C0