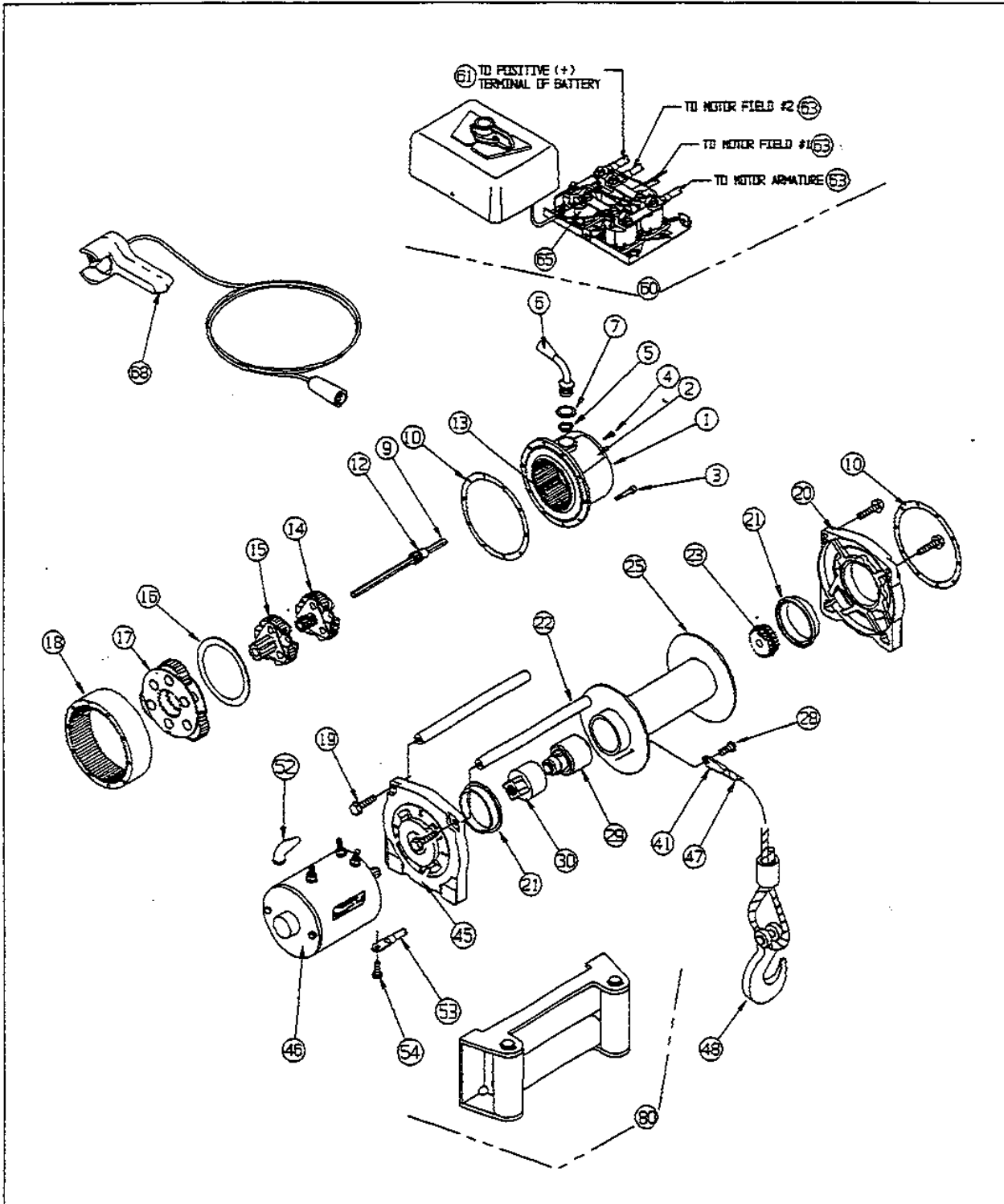


XD9000

SERIAL NO. 379625 THROUGH 383581



WARN XD9000 WINCH REPLACEMENT PARTS LIST			
SERIAL NO. 379625 THROUGH 383581			
ORDERING INFORMATION : When ordering please give Warn Model no., Serial number & Battery voltage. Parts may be obtained through your local dealer or distributor.			
ITEM	QTY	PART NO.	DESCRIPTION
1	1	27337	END HOUSING (Includes item 2)
2	1	25754	DECAL
3	10	13850	SOCKET HEAD CAPSCREW, 10-24X2 1/2
4	1	13872	CLUTCH LEVER DETENT SCREW
5	1	21010	SEAL, O-RING (SQUARE)
6	1	21012	CLUTCH LEVER ASSEMBLY, (Includes items 4, 5, & 7)
7	1	21008	RETAINER, SEAL
9	1	27130	HEX SHAFT, 10.1
10	2	13848	GASKET
12	1	13874	SUN GEAR
13	1	13839	RING GEAR, SLIDING
14	1	28430	CARRIER ASSEMBLY, STAGE 1
15	1	28433	CARRIER ASSEMBLY, STAGE 2
16	1	13826	THRUST BEARING
17	1	25625	CARRIER ASSEMBLY, STAGE 3
18	1	25308	RING GEAR
19	4	28683	FLANGE HEAD CAPSCREW, 5/16-18X1-1/4
20	1	25986	DRUM SUPPORT, GEAR TRAIN
21	2	13831	DRUM BUSHING
22	2	32408	TIE ROD
23	1	13824	DRIVE SPLINE, (Includes item 24)
24	1	13827	RETAINING RING
25	1	25107	DRUM ASSEMBLY
26	1	13699	BUTTON HEAD CAPSCREW, 1/4-20X1/4"
29	1	32455	BRAKE ASSEMBLY
30	1	26006	MOTOR COUPLER
41	1	16463	WIRE ROPE TERMINAL KJT
45	1	25985	DRUM SUPPORT, MOTOR END
46	1	25982	MOTOR, 12V DC
	1	34526	MOTOR, 24V DC

WARN XD9000 WINCH REPLACEMENT PARTS LIST			
SERIAL NO. 379625 THROUGH 383581			
ORDERING INFORMATION : When ordering please give Warn Model no., Serial number & Battery voltage. Parts may be obtained through your local dealer or distributor.			
ITEM	QTY	PART NO.	DESCRIPTION
47	1	27110	WIRE ROPE ASSEMBLY, 5/16X100" (Includes item 41)
48	1	5320	CLEVIS HOOK, 3/8 SLIP
52	3	2090	BOOT, TERMINAL ELECTRIC
53	1	15901	CABLE , ELECTRIC, 2GA. X 72" (Black)
54	1	34402	HEX HEAD CAPSCREW, M8X2.25X20mm
60	1	38842	WINCH CONTROL, 12V DC
	1	38843	WINCH CONTROL, 24V DC
61	1	33295	CABLE, ELECTRIC 2GA. X 72" (Red)
65	4	28396	SOLENOID, UPRIGHT TERMINAL
68	1	38626	REMOTE CONTROL ASSEMBLY
			S,
80	1	5742	FAIRLEAD, ROLLER
			P/N 34302 REV B0