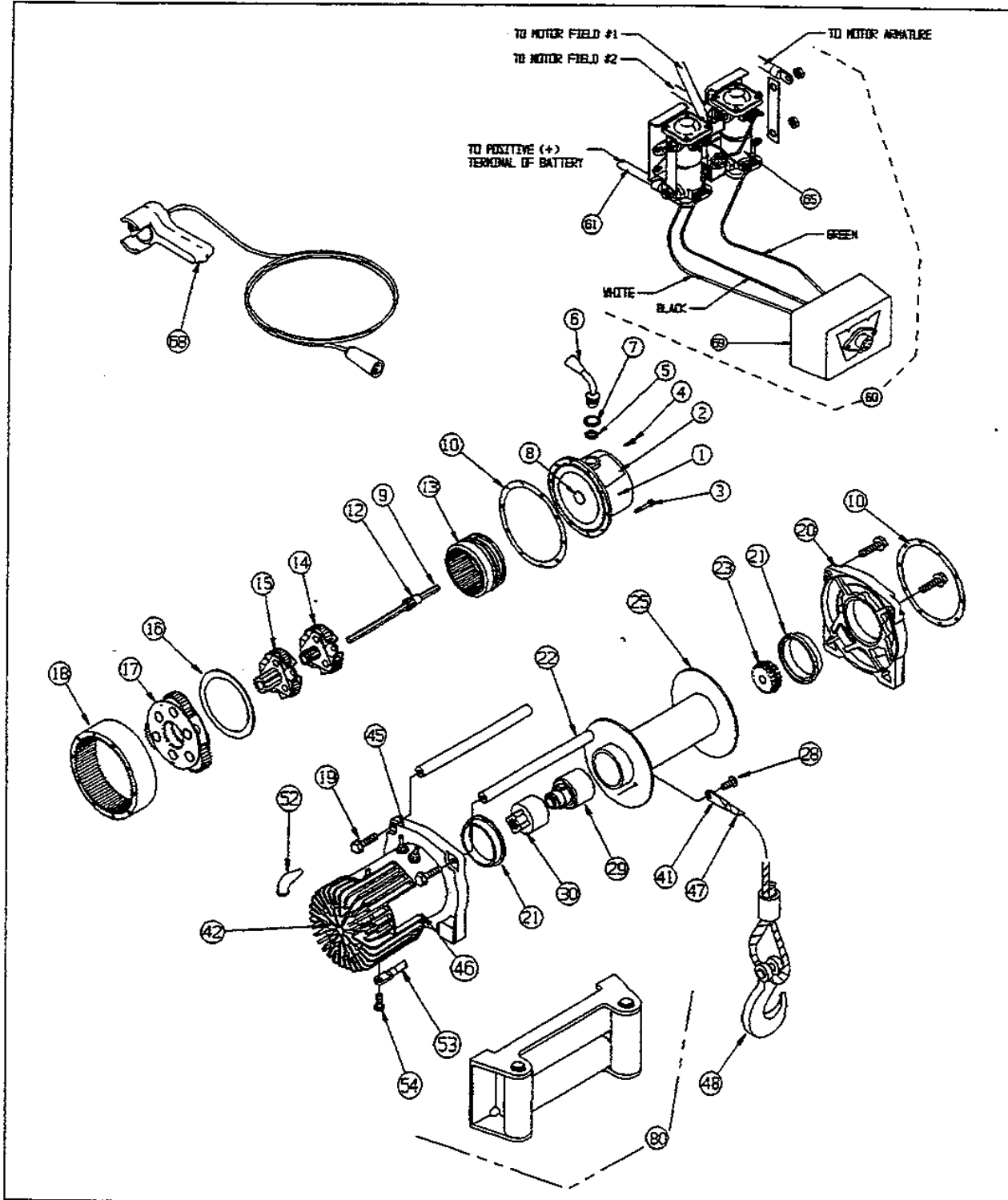


XD9000

SERIAL NO. UP TO 348579



WARN XD9000 WINCH REPLACEMENT PARTS LIST				WARN XD9000 WINCH REPLACEMENT PARTS LIST			
SERIAL NO. UP TO 348579				SERIAL NO. UP TO 348579			
ORDERING INFORMATION : When ordering please give Warn Model no., Serial number & Battery voltage. Parts may be obtained through your local dealer or distributor.				ORDERING INFORMATION : When ordering please give Warn Model no., Serial number & Battery voltage. Parts may be obtained through your local dealer or distributor.			
ITEM	QTY	PART NO.	DESCRIPTION	ITEM	QTY	PART NO.	DESCRIPTION
1	1	27337	END HOUSING	46	1	25982	MOTOR, 12V DC
2	1	25754	DECAL		1	34526	MOTOR, 24V DC
3	10	13850	SOCKET HEAD CAPSCREW, 10-24X2 1/2	47	1	25987	WIRE ROPE ASSEMBLY, 5/16X100' (Includes item 41)
4	1	13872	CLUTCH LEVER DETENT SCREW	48	1	5320	CLEVIS HOOK, 3/8 SLIP
5	1	21010	SEAL, O-RING (SQUARE)	52	3	2090	BOOT, TERMINAL ELECTRIC
6	1	21012	CLUTCH LEVER, (INCLUDES ITEMS 4,5&7)	53	1	15901	CABLE , ELECTRIC, 2GA. X 72' (Black)
7	1	21008	RETAINER, SEAL	54	1	26744	HEX HEAD CAPSCREW, M8X2.25X20mm
8	1	13868	THRUST PLATE	60	1	38842	WINCH CONTROL, 12V DC
9	1	27130	HEX SHAFT, 10.1		1	38843	WINCH CONTROL, 24V DC
10	2	13848	GASKET	61	1	33295	CABLE, ELECTRIC 2GA. X72' (Red)
11	1	13829	BUSHING	65	4	2040	SOLENOID, TERMINAL 12V
12	1	13874	SUN GEAR		2	2040	SOLENOID, TERMINAL 24V
13	1	13839	RING GEAR, SLIDING		2	6341	SOLENOID, TERMINAL 24V
14	1	14401	CARRIER ASSEMBLY, STAGE 1	68	1	38626	REMOTE CONTROL ASSEMBLY
15	1	25628	CARRIER ASSEMBLY, STAGE 2				
16	1	13826	THRUST BEARING				
17	1	25625	CARRIER ASSEMBLY, STAGE 3	80	1	5742	FAIRLEAD, ROLLER
18	1	25308	RING GEAR				
19	4	25748	SOCKETHEAD CAPSCREW, 5/16-18X1-1/4				
20	1	25986	DRUM SUPPORT, GEAR TRAIN				
21	2	13831	DRUM BUSHING				
22	2	25749	TIE ROD				
23	1	14584	DRIVE SPLINE, (Includes item 24)				
24	1	13827	RETAINING RING				
25	1	26107	DRUM ASSEMBLY				
28	1	13699	BUTTON HEAD CAPSCREW, 1/4-20X1/4				
29	1	27341*	BRAKE ASSEMBLY				
30	1	26006	MOTOR COUPLER				
41	1	16463	WIRE ROPE TERMINAL KIT				
42	1	25984	ENDCAP, FINNED ALUMINUM				
45	1	25985	DRUM SUPPORT, MOTOR END				

P/N 27340 REV A0