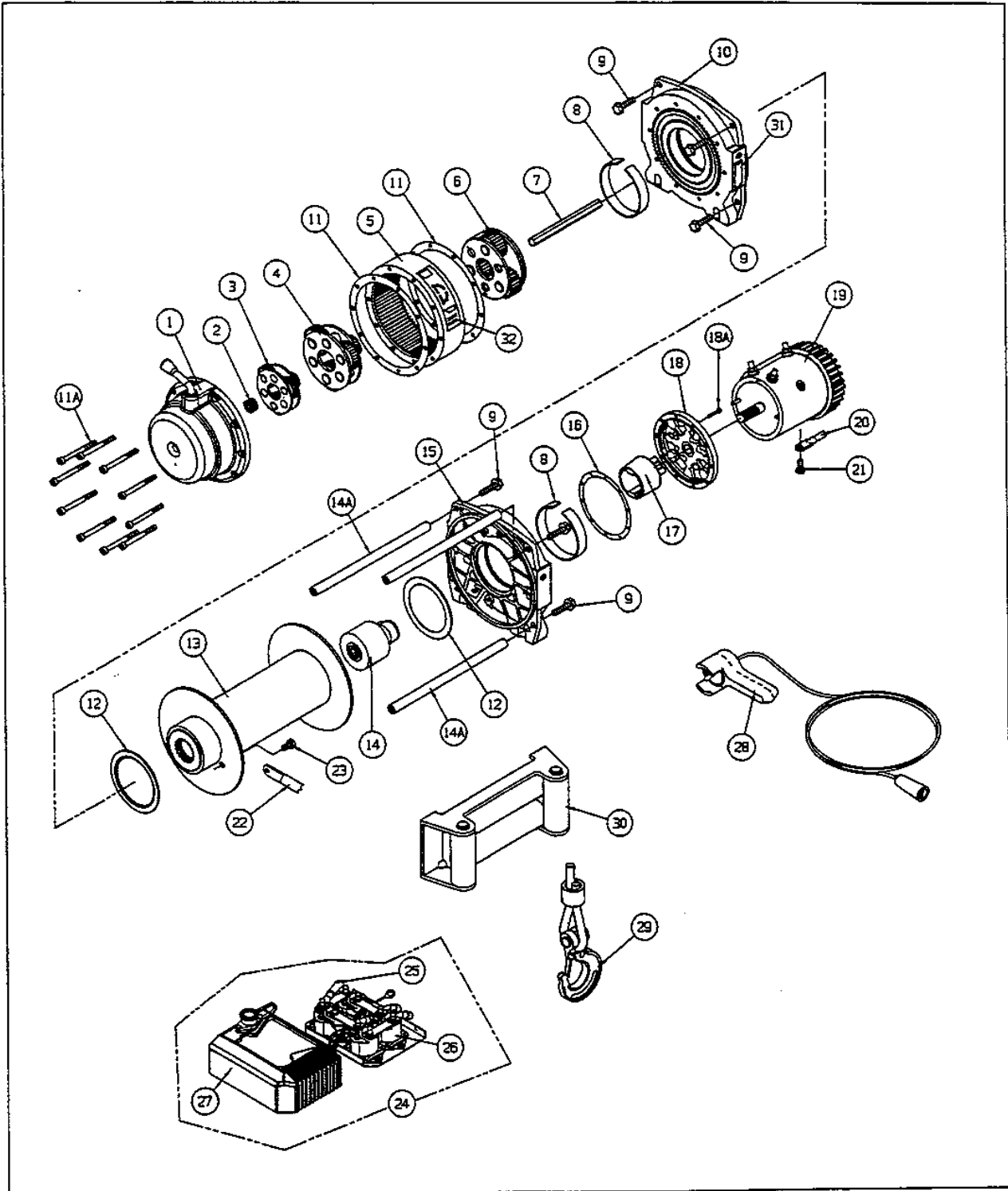


# M15000

SERIAL NO. 690729 UP TO 695174



WARN M15000 WINCH REPLACEMENT PARTS LIST SERIAL NO. 690729 UP TO 695174 (P/N 47801)			
<b>ORDERING INFORMATION:</b> When ordering please give Warn Model, Serial Number & Battery voltage. Part may be obtained through your local dealer or distributor.			
ITEM	QTY	PART NO	DESCRIPTION
1	1	35241	GEAR HOUSING
2	1	32437	SUN GEAR, 12 TOOTH
3	1	61739	CARRIER ASSEMBLY, STAGE 1
4	1	61738	CARRIER ASSEMBLY, STAGE 2
5	1	25546	RING GEAR, OUTPUT STAGE
6	1	30335	CARRIER ASSEMBLY, STAGE 3
7	1	28404	DRIVE SHAFT, 12.15 x .312"
8	2	16336	DRUM BUSHING NYLON
9	6	60451	BOLT, SHCS, 5/16-18 x 1-1/4F
10	1	33223	DRUM SUPPORT, GEAR TRAIN END  (Includes item: 8,9,11,14A,15,&31)
11	2	14964	GASKET
11A	10	15603	CAPSCREWS, 1/4-20X3"
12	2	13826	THRUST WASHER, NYLON
13	1	15466	DRUM ASSEMBLY
14	1	32456	BRAKE ASSEMBLY
14A	3	32408	TIE ROD
15	1		DRUM SUPPORT, MOTOR END
16	1	13848	GASKET
17	1	60730	DRIVER, BRAKE WIDE TANGS
18	1	25790	MOTOR ADAPTER
18A	5	5553	CAPSCREW #10-24 x 3/4"
19	1	38894	MOTOR, 12V, BIC, LONG W/FINNEED CAP
20	1	15901	CABLE ASSEMBLY, 72" BLACK
21	1	26744	CAPSCREW, M8x1.25 X 12mm
22	1	61950	WIRE ROPE ASSEMBLY, 7/16x90'
23	1	16064	CPSCR BTN HD, 5/16-18x3/8"

WARN M15000 WINCH REPLACEMENT PARTS LIST			
<b>ORDERING INFORMATION:</b> When ordering please give Warn Model, Serial Number & Battery voltage. Part may be obtained through your local dealer or distributor.			
ITEM	QTY	PART NO	DESCRIPTION
24	1	61957	S/P, CONTROL PACK, 12V, FINNEED CVR
25	1	33295	CABLE ASSEMBLY, 72" RED
26	4	28396	SOLENOID, TERMINAL UPRIGHT
27	1	61948	HOUSING, ASSY, CONTROL, FINNEED
28	1	38626	REMOTE CONTROL ASSEMBLY 12'
29	1	28626	HOOK, CLEVIS, 1/2" SAFETY
30	1	61956	ROLLER FAIRLEAD ASSEMBLY
31	1	13698	LABEL DRUM ROTATION
32	1	61941	LABEL NAMEPLATE, M15000

P/N 61947 REV A0