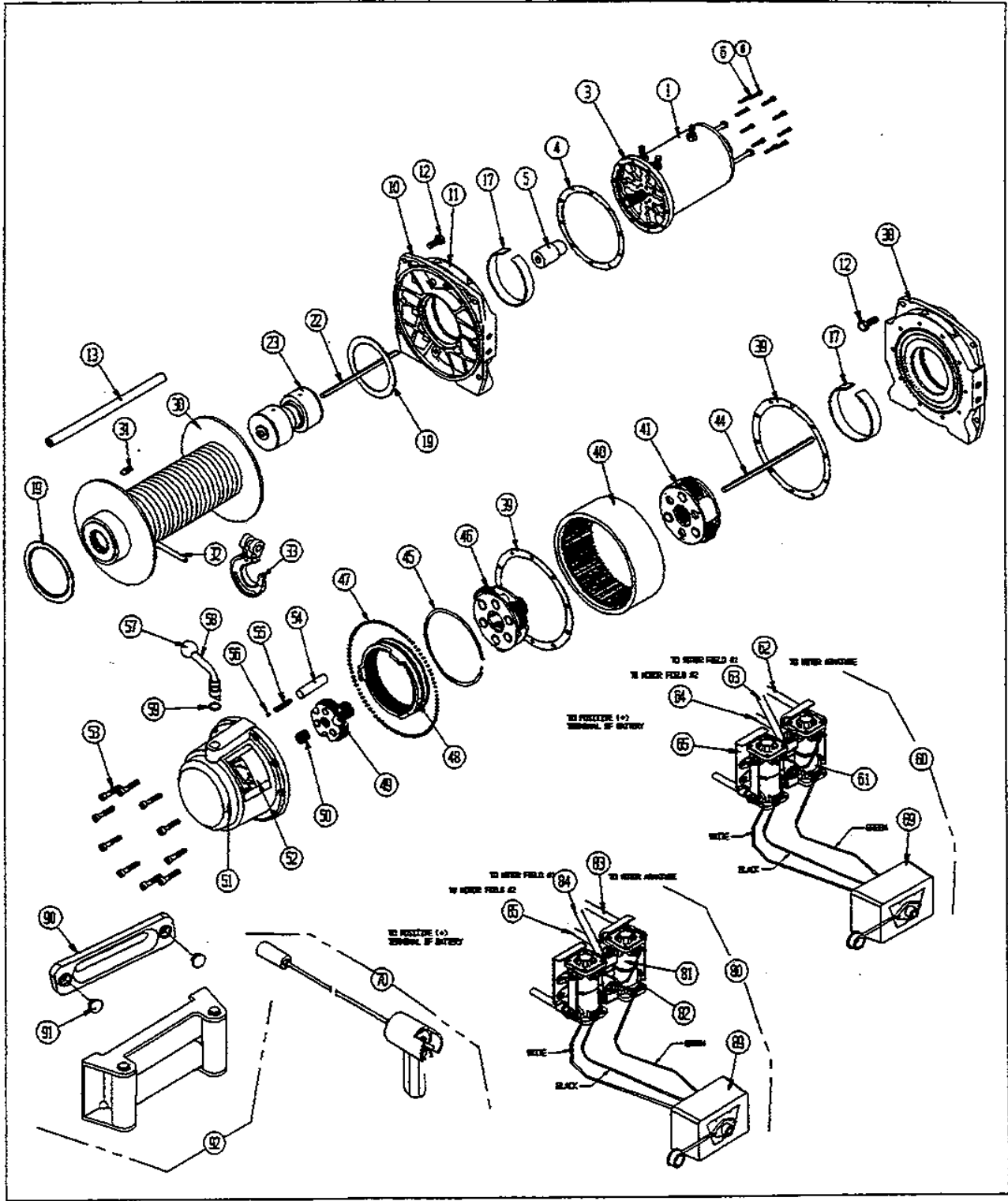


# M12000

SERIAL NO. UP TO 41371



WARN M12000 WINCH REPLACEMENT PARTS LIST				WARN M12000 WINCH REPLACEMENT PARTS LIST			
SERIAL NO. UP TO 41371				ORDERING INFORMATION:			
ORDERING INFORMATION:				When ordering please give Winch Model, Serial number & Battery voltage. Parts may be obtained through your local dealer or distributor.			
When ordering please give Warn Model, Serial Number & Battery voltage. Part may be obtained through your local dealer or distributor.				When ordering please give Winch Model, Serial number & Battery voltage. Parts may be obtained through your local dealer or distributor.			
ITEM	QTY	PART NO	DESCRIPTION	ITEM	QTY	PART NO	DESCRIPTION
1	1	31681	MOTOR, 12 V (Include items 3 & 4)	50	1	14843	SUN GEAR
1	1	31682	MOTOR, 24 V (Include items 3 & 4)	51	1	35241	GEAR HOUSING
3	1	25790	MOTOR ADAPTER	52	1	15693	CLUTCH POSITION LABEL
4	1	13848	GASKET	53	10	15603	SOCKETHEAD CAPSCREW, 1/4-20 X 3"
5	1	16000	MOTOR SHAFT ADAPTOR	54	1	15686	DETENT SPACER
6	10	5553	SOCKET HEAD CAPSCREW, 10-24 X .75	55	1	1833	COMPRESSION SPRING
10	1	33223	DRUM SUPPORT, MOTOR END and GEAR TRAIN END (Includes item: 11, 12, 13, 17 & 38)	56	1	1834	STEEL BALL, 1/4" DIA.
11	1	13698	DRUM ROTATION LABEL	57	1	15604	KNOB
12	6	1827	HEX HEAD CAPSCREW 3/8-16 X 1"	58	1	16479	CLUTCH LEVER (Includes items 57 & 59)
13	3	32408	TIE ROD	59	1	15605	O-RING SEAL
17	2	16336	NYLON DRUM BUSHING	60	1	38844	CONTROL PACK, 12V
19	2	13826	NYLON THRUST BEARING	61	4	2040	SOLENOID SWITCH, 12V
22	1	15985	INPUT SHAFT (5.45")	62	1	15803	CABLE, 10.5" RED
23	1	27343	BRAKE ASSEMBLY	63	1	6008	CABLE, 6.8" BLACK
30	1	15466	DRUM ASSEMBLY	64	1	6007	CABLE, 5.5" BLACK
31	1	16064	BUTTON HEAD CAPSCREW, 5/16-18 X .38	65	1	6004	SOLENOID MOUNTING PLATE, 12V
32	1	15712	WIRE ROPE ASSEMBLY, 3/8" X 125'		1	6347	SOLENOID MOUNTING PLATE, 24V
33	1	15789	3/8" CLEVIS HOOK	69	1	28461	SOLENOID HOUSING
34	1	16464	TERMINAL KIT, 3/8"		1	16296	3-PIN PLUG
38	1	See Item 10	DRUM SUPPORT, GEAR TRAIN END (Includes item 17)	70	1	38626	REMOTE CONTROL ASSEMBLY 12'
39	2	14964	GASKET		1	15989	SERVICE KIT, REMOTE 12'
40	1	15684	RING GEAR, OUTPUT STAGE	80	1	21789	CONTROL PACK, 24V DC
41	1	30335	CARRIER ASSEMBLY, OUTPUT STAGE	81	2	2040	SOLENOID SWITCH (UNVENTED) FOR 24V DC
44	1	14934	DRIVE SHAFT, (5.65")	82	2	6341	SOLENOID SWITCH (VENTED) FOR 24V DC
45	2	15581	RETAINING RING	83	1	15803	CABLE, 10.5" RED
46	1	15645	CARRIER ASSEMBLY, STAGE 2	84	1	6008	CABLE, 6.8" BLACK
47	85	22350	STEEL BALL, 3/16" DIA.	85	1	6007	CABLE, 5.5" BLACK
48	1	21878	RING GEAR, CLUTCH, STAGE 2	89	1	18141	SOLENOID HOUSING
49	1	15643	CARRIER ASSEMBLY, STAGE 1	90	1	7608	HAWSE FAIRLEAD
NS	1	21009	THRUST PLATE	91	2	32412	SOFT PLUG
				92	1	5742	FAIRLEAD, ROLLER